



## Premium Water Conditioning

*Your family deserves high quality water, so why not have the best designed system installed in your home?*

Clean, soft, chlorine-free water is essential to our health, good for our home and pets, and can actually save you money.

With the ever diminishing quality of today's water supply, our mission is to provide your family with the most advanced water conditioning systems available.

### Designed to fit your family's needs:

- Helps eliminate dry skin and scalp
- Soft, silky, hardness free water
- Cleaner, shinier dishes and silverware and scale-free plumbing fixtures
- Makes cleaning easier, saves you money on soap and detergent
- Eliminates water contaminants
- Wash your vehicles and recreational toys with hardness free water to help eliminate spotting

### System Capacities

#### 1 CuFt Hero

Typical for a family of up to 4 people. Flow rates up to 10 GPM. 32,000 grain capacity.

#### 1.5 CuFt Hero

Typical for a family of up to 6 people. Flow rates up to 15 GPM. 48,000 grain capacity.

#### 2 CuFt Hero

Typical for a family greater than 5 people. Flow rates up to 20 GPM. 64,000 grain capacity.

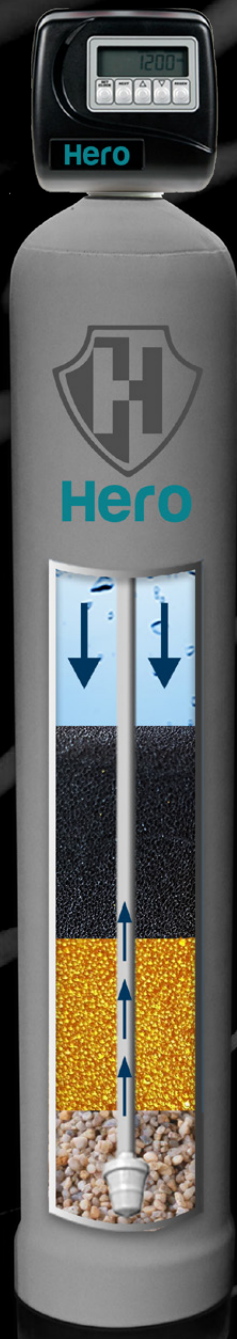
*Depends on water usage and water quality conditions. Not intended for microbiologically unsafe or unknown water quality. Disinfection may be required. This system is intended for treatment of municipal water, any other application requires a water quality analysis for best results.*

### System Specifications

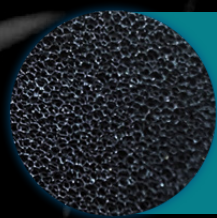
System	Tank Size	Weight	Height	Width	Depth	Inlet/Outlet
HW100	10" X 54"	74lbs	61"	27"	18"	1"
HW150	12" X 52"	93lbs	59"	28"	18"	1"
HW200	13" X 54"	121lbs	61"	29"	18"	1"

*Do not exceed 80 psi. Intended for residential use only.*



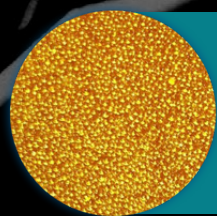


With our inclusive, all-in-one system, the incoming water passes through the patented reticulated carbon cubes, removing or greatly reducing harmful chlorine and chloramines. The chlorine free water then passes through the softening bed, resulting in soft, hardness-free water.



**SNRF-CC Modified Reticulated Catalytic Carbon Cubes**

A modified reticulated catalytic carbon that has the ability to absorb the entire chloramine molecule at once, without the need to break the ammonia/chlorine bond first, while also reducing soluble lead. This creates a higher capacity and greater flow rate than traditional catalytics.



**10% Crosslink Resin**

This resin has more intersections or strands "crosslinking" holding the beads together than standard 8% resin. This allows the resin bead to have greater strength and therefore a longer lifespan, sometimes double, than that of standard resin, especially when softening chlorinated water.



**High Quality Gravel Media**

High hardness, high density filter media, effectively filters and provides a high quality media bed for this system.

*Every home deserves a*



Proudly Assembled In The USA By:

