

# ENCORE



## Premium Water Filtration

The Reveal premium water system is ideal for whole house softening and conditioning.

It allows for the removal of common household contaminants, giving your family soft, silky water without hardness and chlorine.

Powered by NSF approved reticulated medias, this premium whole house softening and conditioning system gives you benefits far beyond traditional water treatment.

- Chlorine and chloramine free water
- Constant soft, silky, hardness-free water
- Bacteria, heavy metals, and algae free water

## System Capacities

### 1 CuFt

Typical for a family of up to 4 people.  
Flow rates up to 10 GPM.  
32,000 grain capacity.

### 1.5 CuFt

Typical for a family of up to 6 people.  
Flow rates up to 15 GPM.  
48,000 grain capacity.

### 2 CuFt

Typical for a family greater than 5 people.  
Flow rates up to 20 GPM.  
64,000 grain capacity.

*Depends on water usage and water quality conditions. Not intended for microbiologically unsafe or unknown water quality. Disinfection may be required. This system is intended for treatment of municipal water, any other application requires a water quality analysis for best results.*

**\*Lifetime Warranty**

## System Specifications

*3/4" - 1.5" Inlet/Outlet sizes also available by request.*

Tank Size	Weight	Height	Width	Depth	Inlet/Outlet
10" X 54"	115lbs	61"	28"	18"	1"
12" X 52"	150lbs	59"	30"	18"	1"
13" X 54"	190lbs	61"	32"	18"	1"

*Recommended PSI usage is 80 psi. Intended for residential use only. \*Lifetime warranty excludes KDF and carbon. Softening Resin covered by warranty if carbon is replaced every 5 years.*

# Reveal

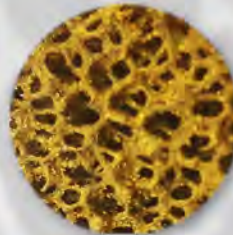
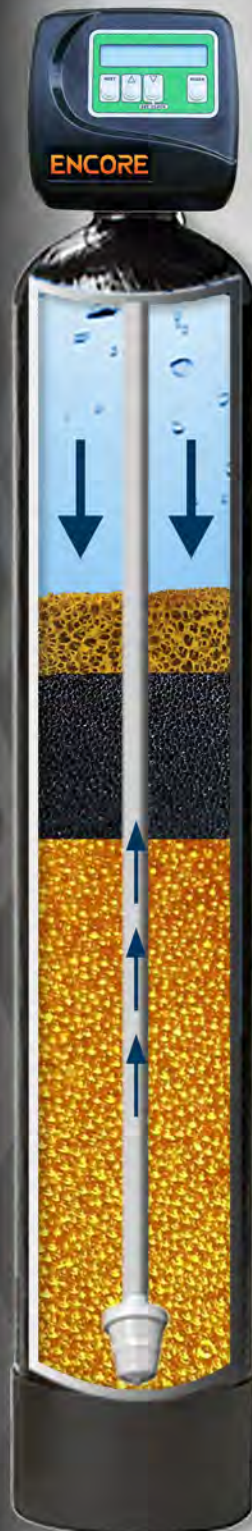


## Water The Way Nature Intended

The Reveal utilizes the Clack metered control valve efficiently reducing waste water by 30% for reliable pure water.

### Benefits of Reticulated Media

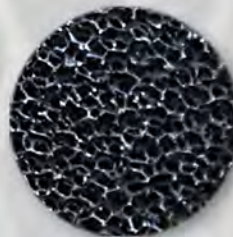
- Greater surface area, more effective than granular media
- Less backwashing preventing less waste water
- Reduces pressure drop up to 50%
- Prevents channeling and plugging versus granular media
- Improves efficacy and efficiency
- Creates greater contact time
- NSF/ANSI approved



### Reticulated KDF 55 Media Cubes

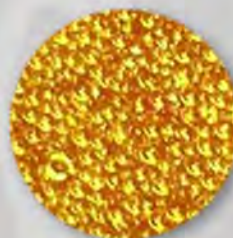
Designed for removing and reducing chlorine, bacteria, and soluble heavy metals. This media also helps control scale and algae, even in hot water applications, without the issues of packing and channeling like common granular KDF.

*\*KDF 85 is available by special request*



### SNRF-CC Modified Catalytic Carbon

A modified catalytic carbon that has the ability to absorb the entire chloramine molecule at once, without the need to break the ammonia/chlorine bond first, while also reducing soluble lead. This creates a higher capacity and greater flow rate than traditional catalytics.



### 10% Crosslink Resin

This resin has more intersections or strands "crosslinking" holding the beads together better than standard 8% resin. This allows the resin bead to have greater strength and therefore a longer lifespan, sometimes double, than that of standard resin, especially when softening chlorinated water.

### Typically Sized As:

2-4 People - Reveal 1 Cuft

3-6 People - Reveal 1.5 Cuft

5+ People - Reveal 2 Cuft

Typical sizing will depend on hardness of water.



4-Stage  
"Twist 'N Toss"  
RO Filter System



Air Injected  
Iron & Sulfur  
Removal  
System



Whole House  
5 Level Filtration  
with Ion X Core  
Technology



Softening,  
Chlorine, &  
Bacteria  
Protection



Constant Water  
Softening, Chlorine,  
and Bacteria  
Protection



Whole House  
5 Level Filtration  
with Nano  
Technology